

---

# Bluetooth

---

***MICRO-STAR INT'L***

Version 1.4  
Nov. 2003  
G52-W6967X3

---



### **FCC-B Radio Frequency Interference Statement**

This equipment has been tested and found to comply with the limits for a class B digital device, pursuant to part 15 of the FCC rules. These limits are designed to provide reasonable protection against harmful interference when the equipment is operated in a commercial environment. This equipment generates, uses and can radiate radio frequency energy and, if not installed and used in accordance with the instruction manual, may cause harmful interference to radio communications. Operation of this equipment in a residential area is likely to cause harmful interference, in which case the user will be required to correct the interference at his own expense.

#### **Notice 1**

The changes or modifications not expressly approved by the party responsible for compliance could void the user's authority to operate the equipment.

#### **Notice 2**

Shielded interface cables and A.C. power cord, if any, must be used in order to comply with the emission limits.

### **VOIR LA NOTICE D'INSTALLATION AVANT DE RACCORDER AU RESEAU.**

**FCC ID: I4L-MS6967/MS6968**

This device complies with part 15 of the FCC Rules. Operation is subject to the following two conditions: (1) This device may not cause harmful interference, and (2) This device must accept any interference received, including interference that may cause undesired operation.

---

---

## **FCC Requirement**

This equipment complies with Part 68 of the FCC Rules. On the bottom of this equipment is a label that contains, among other information, the FCC registration Number, Ringer Equivalence Number (REN) and USOC jack type for this equipment. You must, upon request, provide this information to your telephone company.

An FCC compliant telephone cord and modular jack is provided with this equipment. This equipment is designed to be connected to the telephone network or premise wiring use a compatible modular jack which is Part 68 compliant. See installation instructions for details.

The REN is useful to determine the quantity of devices you may connect to your telephone line and still have all of those devices ring when your telephone number is called. In most, but not all areas, the sum of the REN of all devices connected to on line should not exceed five (5.0). To be certain of the number of devices you may connect to your line, as determined by the REN, you should contact your local telephone company to determine the maximum REN for your calling area. If your telephone equipment causes harm to the telephone network, the Telephone Company may discontinue your service temporarily. If possible, they will notify you in advance, but if advance notice is not practical, you will be notified as soon as possible. You will be informed of your right to file a complaint with the FCC.

Your telephone company may make changes in its facilities, equipment, operations or procedures that could affect the proper functioning of your equipment. If they do, you will be notified in advance to you an opportunity to maintain uninterrupted telephone service.

If you experience trouble with this telephone equipment, please contact MICRO-STAR INTERNATIONAL for information on obtaining service or repairs. The telephone company may ask that you disconnect this equipment from the network until the problem has been corrected or until you are sure that the equipment is not malfunctioning.

This equipment may not be used on coin service provided by the telephone company. Connection to party lines is subject to stat tariffs.

---

---

## *Copyright Notice*

The material in this document is the intellectual property of **MICRO-STAR INTERNATIONAL**. We take every care in the preparation of this document, but no guarantee is given as to the correctness of its contents. Our products are under continual improvement and we reserve the right to make changes without notice.

## *Trademarks*

All trademarks used in this manual are the sole property of their respective owners.

Pentium is a registered trademark of Intel Corporation.

Windows is a registered trademark of Microsoft Corporation.

## *Revision History*

Revision	Revision History	Date
V 1.2	Software update	Feb. 2003
V 1.3	Adding "Human Interface Device"	Nov. 2003
V1.4	Adding "Security Code"	Nov. 2003

---

## ***Important Safety Precautions***

Always read and follow these basic safety precautions carefully when handling any piece of electronic component.

1. Keep this User's Manual for future reference.
  2. Keep this equipment away from humidity.
  3. Lay this equipment on a reliable flat surface before setting it up.
  4. The openings on the enclosure are for air convection hence protects the equipment from overheating.
  5. All cautions and warnings on the equipment should be noted.
  6. Never pour any liquid into the opening that could damage or cause electrical shock.
  7. If any of the following situations arises, get the equipment checked by a service personnel:
    - The USB cable is damaged
    - Liquid has penetrated into the equipment
    - The equipment has been exposed to moisture
    - The equipment has not work well or you can not get it work according to User's Manual
    - The equipment has dropped and damage
    - If the equipment has obvious sign of breakage
  8. **DO NOT LEAVE THIS EQUIPMENT IN AN ENVIRONMENT UNCONDITIONED, STORAGE TEMPERATURE ABOVE 60<sup>o</sup> C OR BELOW -20<sup>o</sup>C, IT MAY DAMAGE THE EQUIPMENT.**
-

---

# ***CONTENTS***

<b>1. Introduction .....</b>	<b>1</b>
1.1 Bluetooth Technology .....	1
1.2 MSI™ PC2PC Bluetooth .....	1
1.3 Hardware Specifications .....	2
<b>2. Installation .....</b>	<b>5</b>
2.1 Package Checkup .....	5
2.2 Software Installation .....	6
2.3 Hardware Installation .....	9
<b>3. Software Operations -- My Bluetooth Places .....</b>	<b>13</b>
3.1 Introduction .....	13
3.2 Basic Operations .....	19
3.3 Configure Bluetooth .....	26
3.4 Security .....	74
3.5 Troubleshooting .....	78
<b>4. Technical Support .....</b>	<b>83</b>
<b>5. Glossary .....</b>	<b>85</b>

---

## ***1. Introduction***

### ***1.1 Bluetooth Technology***

The term “Bluetooth” refers to a worldwide standard for the wireless exchange of data between two devices. In order to exchange data, two Bluetooth devices must establish a connection. Before a connection is established, one device must request a connection with another. The second device accepts (or rejects) the connection.

The originator of the request is known as the client. The device that accepts (or rejects) the request is known as the server. Many Bluetooth devices can act as both client and server.

A client Bluetooth device runs a software program that requests a connection to another device as part of its normal operation. For example, the program may request a connection to a remote computer, a printer, or a modem. Becoming a Bluetooth client normally requires an action by the device operator, such as an attempt to browse a remote computer, print a file, or dial out on a modem.

Every Bluetooth device that provides a service must be prepared to respond to a connection request. Bluetooth software is always running in the background on the server, ready to respond to connection requests.

### ***1.2 MSI™ PC2PC Bluetooth***

MSI™ PC2PC Bluetooth provides wireless technology that revolutionizes personal connectivity. It is the solution for the seamless integration of Bluetooth technology into personal computers,

enabling short-range wireless connections between desktop/laptop computers, Bluetooth-enabled peripherals (printers, faxes,...), portable handheld devices, and connectivity to the Internet.

### 1.3 Hardware Specifications

	<b>Bluetooth Transceiving Key/Module</b>
<b>General</b>	
H/W Interface	USB
Bluetooth Spec. Compliance	Ver. 1.1
Throughput	About 723Kbps (data channels)
Operating Volt.	5V from USB interface
Operating Range	Up to 200M for open space (depending on the environment)
Regulatory Approval	FCC, CE, BQB (Bluetooth Qualified), BSMI
Temperature	Storage temp: -10°C~+70°C Operating temp: -10°C~+70°C
<b>Radio</b>	
Spread Spectrum	Frequency Hopping Spread Spectrum (FHSS) Compliant with FCC part 15
Frequency Range	2.4~2.4835GHz (2.4GHz ISM Band)
RF Channels	79-channel system for USA, Japan, and Europe (except France, 23-channel system for France)
Modulation	GFSK, BT=0.5
Output Power Class	Bluetooth Power Class 1
Output Power	+18dBm (Max.)
Receiver Sensitivity	Better than -90dBm with BER < 0.1%
Max Input Level	-20dBm
Power Control	Yes
<b>Base Band</b>	
Physical Links	Support ACL link

Network Capabilities	Support piconet point-to-point and point-to-multipoint connections
<b>Link Manager</b>	
3-slot Packets	Yes
5-slot Packets	Yes
Slot Offset	Yes
Timing Accuracy	Yes
Switch	Yes
Hold Mode	Yes
Sniff Mode	Yes
Test Mode	Yes
Park Mode	Yes
RSSI	Yes
Power Control	Yes
Authentication	Yes
Encryption	Yes
<b>Software</b>	
System Support	Windows® 2000/ME/98/XP
Profile Support	Generic Access Profile/Service Discovery Profile/Serial Port Profile/Dial-Up Networking Profile/Fax Profile/LAN Access Profile/Generic Object Exchange Profile/File Transfer Profile/Object Push Profile/Synchronization Profile/Personal Area Network Profile/Hard Cable Replacement Profile



## ***NOTES***

---

---

---

---

---

---

---

---

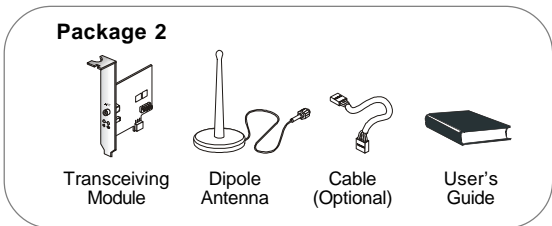
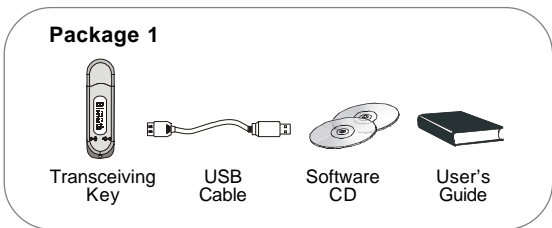
---

---

## **2. Installation**

### **2.1 Package Checkup**

Unpack the package and inspect all the items carefully. If any of the items is damaged or missing, please contact your local dealer as soon as possible. Also, keep the box and packing materials at hand, in case you need to ship the unit in the future. Your package content may vary depending on the items purchased. It can be package 1, package 2, or the combination of both as listed below:



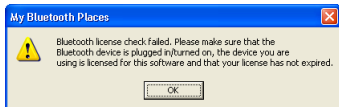
## 2.2 Software Installation

1. Bluetooth Software version 1.4.2 build 10 will check the license of the hardware. Hence, if you intend to update the software from earlier versions (such as v1.3.x), you must, in the first place, obtain a license key (security code) from WIDCOMM's website (<http://66.45.42.85/msi>).

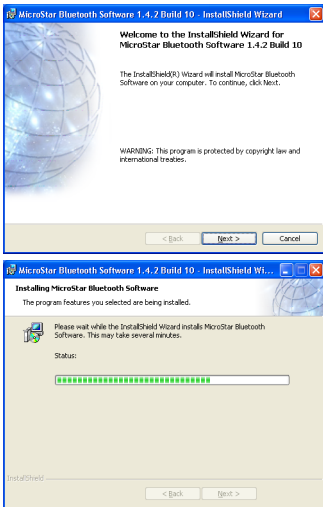


### MSI Reminds You...

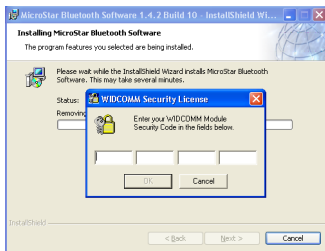
*Be sure to get the unique license key (security code) for your Bluetooth dongle. Otherwise, if the software detects invalid license on the hardware, it will stop working and a warning message will pop up as follows.*



- Key in the requested information and submit. The license key will be sent to you via e-mail shortly.
2. Download the Bluetooth software from MSI's website (<http://www.msi.com.tw/>). Unzip the file and double-click **setup.exe**. Follow the on-screen instructions to install the software step by step.



3. Key in your Bluetooth dongle's unique license key (security code) previously requested from WIDCOMM's website.



4. After completion of the installation, please restart your computer.

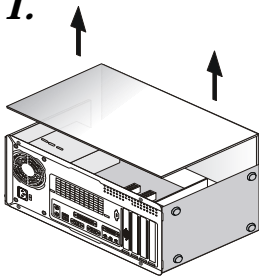


### MSI Reminds You...

1. Every MSI dongle has its unique license key (security code) and one license key can be used on one MSI dongle only. The Bluetooth software will not work if an unmatched security code is keyed in or a Bluetooth dongle of other brands is installed.
2. To use another dongle, enter a folder named "svcpack" and double-click **BTFAeSec.exe**. Key in the dongle's unique security code when the **WIDCOMM Security License** dialog box pops up.

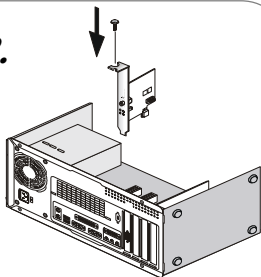
## 2.3 Hardware Installation

**1.**



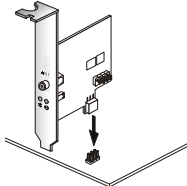
Remove the computer case.

**2.**



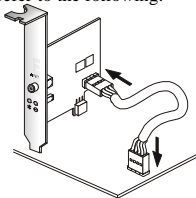
Install the transceiving module onto your mainboard. Procedures may differ depending on the location of the bluetooth pinheader on the mainboard. Please refer to the following:

**2a.**



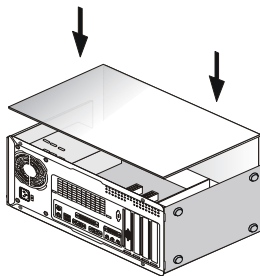
For mainboards with Bluetooth pinheaders located near the PCI slots, ex: MS-6398E, secure the connector on the lower part of the transceiving module directly onto the Bluetooth pinheader. Then, fasten the transceiving module to the mainboard with a bracket screw.

**2b.**



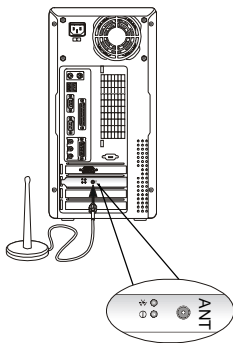
For mainboards with Bluetooth pinheaders located elsewhere (not near the PCI slots), ex: MS-6380E, use the linking cable to secure the identical connector on the transceiving module to the Bluetooth pinheader on the mainboard. Then, fasten the transceiving module to the mainboard with a bracket screw.

**3.**



Install and screw up the computer case.

**4.**



Locate the antenna connector on the transceiving module bracket at the back panel of the computer case. Secure the dipole antenna to this connector and fix the antenna to a location free from signal obstruction. Concrete walls, metal substances, paints with metal composites,... etc. will cause signal obstruction and disable the Bluetooth function.

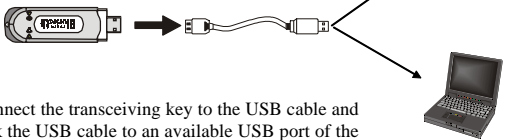
5.



Uncap the transceiving key.



6.



Connect the transceiving key to the USB cable and link the USB cable to an available USB port of the target device with which you wish to establish a wireless Bluetooth connection. The target device can be a desktop PC, a laptop PC, or any other types of PCs with Windows® OS & USB ports.

**MSI Reminds You...**

*Avoid installing the transceiving module and the transceiving key into the same PC.*

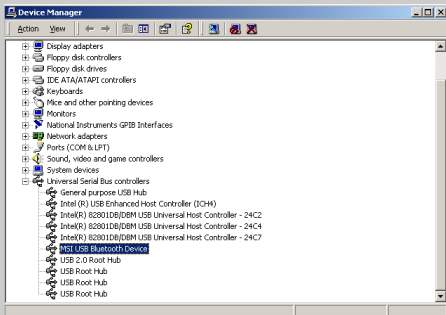


## MSI Reminds You...

**Note 1:** The transceiving key and the transceiving module bracket both integrate one Green (Blue) LED & one Red LED. The Green (Blue) LED indicates the connection status (LED on => under connection / LED off => disconnection or failed connection.). The Red LED indicates the power state

**Note 2:** As the Bluetooth pinheader shares the USB interface with blue-colored USB2.0 connector on the mainboard, utilization of the transceiving module will disable the bottommost USB2.0 port.

**Note 3:** To make sure that the hardware & software have been successfully installed, go to **Control Panel** after restarting your system. Double-click **System** and click the **Device Manager** tab. If the hardware & software installation is complete, the **MSI USB Bluetooth Device** should appear.



## ***3. Software Operations -- My Bluetooth Places***

### ***3.1 Introduction***

#### ***1. Bluetooth Tray***

The Bluetooth tray resides in the Windows system tray, which is normally located in the lower-right corner of the screen. The Bluetooth tray provides fast access to most Bluetooth operations.

#### **From the Bluetooth tray you can:**

- **Access My Bluetooth Places**—double-click the Bluetooth icon, or right-click the Bluetooth icon and then select Explore My Bluetooth Places.
- **Access the Bluetooth Setup Wizard.** This wizard will help you:
  - Configure how this computer accesses a service on another Bluetooth device
  - Locate remote Bluetooth devices
  - Configure the way that this computer provides services to remote Bluetooth devices
  - Set the name and type of this Bluetooth device, e.g., “John’s PC” and “Desktop.”
- **Access the Bluetooth Configuration Panel**—right-click the Bluetooth icon, and then select Advanced Configuration.
- **Access the Quick Connect option**—right-click the Bluetooth icon, select Quick Connect, and then select the type of service to which you wish to connect.
- **Start/Stop Bluetooth on this computer.**

## 2. Access My Bluetooth Places

My Bluetooth Places is part of **Windows Explorer**.

There are *multiple ways* to access My Bluetooth Places:

- In the Windows system tray
  - Right-click the Bluetooth icon and select Explore My Bluetooth Places
  - or
  - Double-click the Bluetooth icon
- On the desktop, double-click the Bluetooth icon

Open Windows Explorer and select My Bluetooth Places in the Folders pane or from the Address shortcut menu.

## 3. Icons Used For Bluetooth Devices And Services

Bluetooth icons provide at-a-glance feedback about a device or service's status by changing appearance.

The Bluetooth icon in the Windows system tray provides feedback about Bluetooth status.

*Figure 1: Bluetooth Icon*


































Bluetooth Icon Indicates Bluetooth Status		
Enabled	Disabled	Connected
		
Blue with White	Blue with Red	Blue with Green

Figure 2: Device Icons for Windows 9x, Me and 2K

Device Icons for Windows 9x, Me and 2K			
Name	Normal	Connected	Paired
Audio Gateway			
Desktop			
Headset			
Laptop			
Modem			
Network Access Point			
Personal Digital Assistant			
Printer			
Telephone			
Unknown			

*Figure 3: Service Icons for Windows 9x, Me and 2K*




















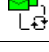



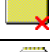
































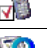



























Service Icons for Windows 9x, Me and 2K			
Name	Normal	Connected	Not Available*
Audio Gateway			
Dial-up Networking			
Fax			
Headset			
Network Access			
PIM Item Transfer			
PIM Synchronization			
Public Folder			
Serial Port			
*Services may be unavailable because they are in use or because the necessary hardware is not installed.			

Figure 4: Device Icons for Windows XP

Name	Normal	Connected	Paired
Audio Gateway			
Desktop			
Headset			
Laptop			
Modem			
Network Access Point			
Personal Digital Assistant			
Printer			
Telephone			
Unknown Device			

*Figure 5: Service Icons for Windows XP*

Service Icons for Windows XP			
Name	Normal	Connected	Not Available*
Audio Gateway			
Dial-up Networking			
Fax			
Headset			
Network Access			
PIM Item Transfer			
PIM Synchronization			
Public Folder			
Serial Port			
*Services may be unavailable because they are in use or because the necessary hardware is not installed.			

## **3.2 Basic Operations**

### **1. Start Or Stop Bluetooth**

**To start Bluetooth:** in the Windows system tray, right-click the Bluetooth icon and select Start the Bluetooth Device. The Bluetooth icon is blue in color with a white insert when Bluetooth is running.

**To stop Bluetooth:** in the Windows system tray, right-click the Bluetooth icon and select Stop the Bluetooth Device. The Bluetooth icon is blue in color with a red insert when Bluetooth is stopped.

### **2. Create A Connection From The Bluetooth Icon In The System Tray**

In the Windows system tray, right-click the Bluetooth icon, select Quick Connect and then the Bluetooth service that you wish to use.

If this computer has created a connection to the desired type of service in the past, the options on the shortcut menu are:

- The name(s) of any device(s) with which prior connections to this type of service have been established. Select a name from the list to re-establish connection.
- Other Devices...Select this option to search for additional devices that potentially provide the desired service, select a device from the list, and then click Connect.

If this computer has never created a connection to this type of service, the only option on the shortcut menu is "Find

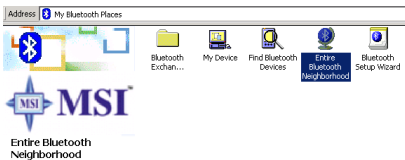
Devices....” Select this option to search for devices that potentially provide the desired service, select a device from the list, and then click Connect.

### **3. Create A Connection Using The Bluetooth Setup Wizard**

- From the Folders pane of Windows Explorer, right-click My Bluetooth Places and select Bluetooth Setup Wizard or
  - In Windows Explorer, with My Bluetooth Places selected, from the Bluetooth menu, select Bluetooth Setup Wizard
- or
- From the Windows system tray: right-click the Bluetooth icon and select Bluetooth Setup Wizard.

Follow the wizard’s on-screen instructions.

### **4. Create A Connection From Entire Bluetooth Neighborhood**



From Windows Explorer:

- In the Folders pane, select Entire Bluetooth Neighborhood, right-click a device name and select “Connect ...” the desired service.
- or
- In the Folders pane, expand Entire Bluetooth

Neighborhood, select a device, and then, in the right pane, right-click a service provided by that device and select “Connect to...”

 **MSI Reminds You...**

*Only available services are displayed in the menus.*

## **5. Find Bluetooth Devices**

**Search for Devices** looks for Bluetooth devices in the vicinity and displays the devices that it finds in My Bluetooth Places.

To start a search for devices, in the Folders pane of My Bluetooth Places, select Entire Bluetooth Neighborhood, and then, from the Bluetooth menu, select Search for Devices.

 **MSI Reminds You...**

*The Bluetooth menu is only visible when My Bluetooth Places is active.*

### **❖ Periodic Search for Devices**

Bluetooth can be configured to automatically search for devices on a regular basis (Bluetooth Configuration Panel > Discovery tab).

One of the advantages of Bluetooth is the mobility that the wireless connections allow. However, mobility means that devices may move in or out of connection range during the time between the automatic updates performed by Bluetooth. To be certain that the displayed list of devices in the neighborhood is current, or if automatic periodic inquiry is not enabled, force an update of the device list using the technique described in Search for Devices, above.

Some devices within connection range may not show up in the list of devices found because:

- Your device is configured to report only specific types or classes of devices (Bluetooth Configuration Panel > Discovery tab, on your device).
- The unlisted device is configured to be non-discoverable (Bluetooth Configuration Panel > Accessibility tab, on the unlisted device).

### 6. Find A Service

The process of determining the services that a device provides is called Service Discovery.

**To initiate a Service Discovery**, in the Folders pane of My Bluetooth Places, right-click a device name and select Discover Available Services from the shortcut menu.

Bluetooth services are those things that this computer can do for remote Bluetooth devices. For example, if this computer allows a remote Bluetooth device to send a fax using a fax modem that is physically attached to this computer, then this computer is providing the Bluetooth fax service. Some services are hardware dependant; this computer cannot provide the fax service unless it has a physical fax modem, for example.

Some Bluetooth services use virtual “hardware.” The Bluetooth Serial Port service, for example, does not use a physical port on this computer. Instead, it creates virtual serial ports that Windows applications can see and use as if they were actual physical ports.

Each Bluetooth service that this computer is capable of providing can be started automatically when Bluetooth starts. Each service can be setup to require security measures before

allowing a remote Bluetooth device to connect.

Bluetooth services require a Bluetooth application on the remote device; services and applications usually have coinciding names; i.e., there is a Bluetooth Fax Service and a Bluetooth Fax Application.

**The services supported by Bluetooth are:**

- Bluetooth Serial Port—a wireless connection between two devices. This connection can be used by applications as though a physical serial cable connected the devices.
- Dial-up Networking—allows a device to use a modem that is physically attached to another Bluetooth device.
- Fax—allows a device to send a fax using a remote Bluetooth cell phone, modem, or computer.
- File Transfer—allows a device to perform file system operations on another Bluetooth device; browse, open, copy, etc.
- Headset—allows a Bluetooth headset to be used as the audio input/output mechanism for another Bluetooth device, such as a computer or cell phone.
- PIM Item Transfer—allows two Bluetooth devices to exchange Personal Information Manager data such as business cards, calendar items, email messages, and notes.
- PIM Synchronization—allows two Bluetooth devices to synchronize Personal Information Manager data.
- Network Access—allows a device to access a Local Area Network via a second Bluetooth device that is physically connected to the network or allows a remote device to become part of an ad hoc network provided by the Bluetooth server.
- Audio Gateway—allows the microphone/speakers on Bluetooth device (typically a computer) to be used as

the audio input/output mechanism for a remote Bluetooth device, such as a cell phone.

All Bluetooth servers do not necessarily provide all of these services. For example, network gateways may provide only the Network Access service.

## **7. Bluetooth Connection Status**

The Bluetooth Connection Status dialog box displays information about the state of a connection and provides a means to disconnect an active connection.

**Display the Connection Status dialog box:** in My Bluetooth Places, from the Folders pane, select a device, and then, in the right pane of My Bluetooth Places, right-click a service name and select Status from the shortcut menu.

The Information provided is:

- **Status:** “Connected” or “Not Connected”
- **Device Name:** the name of the device to which this computer is connected.
- **Duration:** the length of time that this connection has been established, displayed in hours, minutes and seconds. Depending on the service, the connection may time out (automatically disconnect) after a specific period of inactivity.
- **Activity:** the number of bytes sent and received over the connection.
- **Signal Strength:** a graphic indicator that ranges from Too Weak through Good to Too Strong.



### **MSI Reminds You...**

*To change the power transmission level of this*

*computer: from the Bluetooth Configuration Panel, Hardware tab, click the Advanced button, and then change the setting in the Maximum Power Transmission drop-down list. The Advanced button is not available in all countries.*

**The controls in the Bluetooth Connection Status dialog box are**

- **Properties** button: displays the Bluetooth Properties dialog box for this connection.
- **Disconnect** button: closes this connection.
- **Close** button: closes the Bluetooth Connection Status dialog box.

## **8. Send To Bluetooth**

This feature is used to send information to another Bluetooth device. Data types include:

- Files from Windows Explorer
- Documents from Microsoft Office applications, including:
  - Word
  - Excel
  - Access
  - PowerPoint.
- Microsoft Outlook items, including:
  - Contacts
  - Appointments
  - Tasks
  - Messages
  - Notes.

**To use Send to Bluetooth**

1. In the application:
  - a) Windows Explorer—select one or more files to be transferred. Folders cannot be transferred.
  - b) Microsoft Office—only the document in the active window can be transferred.
  - c) Microsoft Outlook—select one or more items to be transferred.
2. From the application's File menu, select Send To, and then select Bluetooth from the shortcut menu.
3. Select a device from the shortcut menu to send the data or  
Select Other..., choose a device from the list, and then click OK to send the data.

### ***3.3 Configure Bluetooth***

#### ***1. Access the Bluetooth Configuration Panel***

The Bluetooth Configuration Panel provides access to settings for Bluetooth services, client applications, hardware, security, discovery, accessibility, default paths, event notification and other Bluetooth related items.

**To Open the Bluetooth Configuration Panel**

- From the Windows Control Panel, select Bluetooth Configuration  
or
- In the Windows System Tray, right-click the Bluetooth icon, and select Advanced Configuration from the shortcut menu.

## 2. Bluetooth Services versus Bluetooth Applications

**Bluetooth Services** are services that this computer provides to remote Bluetooth devices. The Bluetooth services on this computer are referred to collectively in the Bluetooth configuration panel as “Local Services.”

**Bluetooth Applications** are software applications on this computer that allow this computer to use the Bluetooth services that are provided by remote devices. The Bluetooth applications on this computer are referred to collectively in the Bluetooth configuration panel as “Client Applications.” Bluetooth Services and Bluetooth Applications usually have coinciding names; e.g., there is a File Transfer service and a File Transfer client application.

How this computer provides a service to remote devices is configured on the Local Services tab of the Bluetooth configuration panel.

How this computer uses a service that is provided by a remote device is configured on the Client Applications tab of the Bluetooth configuration panel.

## 3. Bluetooth Exchange Folder



This is the highest-level directory on this computer to which a remote Bluetooth device has access.

Devices that have been granted access to this computer's Bluetooth Exchange Folder also have access to all sub-folders contained within that folder and all files in those sub-

folders.

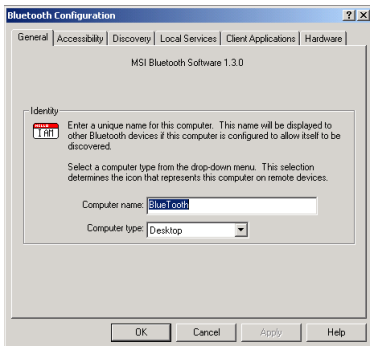
**MSI Reminds You...**

*The Bluetooth Exchange Folder is shared by the PIM Item Transfer and the File Transfer services and can be configured from the Properties page of either of those services. When the Bluetooth Exchange Folder is re-configured for either of these services, the other service will be updated to use the new location.*

#### 4. General Configuration Settings

##### General Configuration Settings

The settings on the General tab of the Bluetooth Configuration Panel determine information that is displayed to remote devices.



## Identity

- **Computer Name**-enter a unique name to identify this computer to other Bluetooth devices in the vicinity; this field cannot be left blank.
- **Computer type**-select either Desktop or Laptop from the shortcut menu to set the type of icon remote devices will use to represent this computer.

## 5. *Bluetooth Applications*

### **\* Overview**

Some built-in Bluetooth applications provide full functionality for a specific task, such as locating other Bluetooth devices or synchronizing two Personal Information Managers. Other built-in Bluetooth applications provide a way for standard Windows applications to accomplish their tasks wirelessly. For example, a Bluetooth application may create a wireless serial connection between computers or provide wireless access to the Internet.

The difference between Bluetooth Applications and Bluetooth Services

- **Bluetooth Applications** are software programs on this computer that allow this computer to use the Bluetooth services that are provided by other devices. In the Bluetooth configuration panel, these programs are referred to collectively as “Client Applications.”
- **Bluetooth Services** are software programs on this computer that provide a service to other devices. In the Bluetooth configuration panel, these applications are referred to collectively as “Local Services.”



### MSI Reminds You...

*Client Applications and Local Services usually have coinciding names; e.g., there may be a Fax service and a Fax application.*

## \* General Configuration

All of the built-in Bluetooth applications allow you to rename the application and to require a secure connection when using the application.

### To access the configuration properties page for a built-in Bluetooth application

- In the Windows system tray, right-click the Bluetooth icon and select Advanced Configuration from the shortcut menu  
or
- From the Windows control panel select Bluetooth Configuration  
or
- From Windows Explorer, right-click Entire Bluetooth Neighborhood and select Properties from the shortcut menu.

In the Bluetooth configuration panel, Client Applications tab, highlight the application to be configured, and then click Properties (or double-click the application).

## \* Human Interface Device

### Overview

The Human Interface Device (HID) Application allows this computer to wirelessly use one or more remote Bluetooth HIDs as input/output devices.

For example, the HID Application allows this computer to use a Bluetooth keyboard and a Bluetooth mouse.

### **Create a Bluetooth HID connection**



#### **MSI Reminds You...**

*Some HIDs have multiple modes. Before establishing a connection, be sure the HID is in the desired mode. For example, in the case of an HID that can function as both a mouse and a laser pointer, be sure the mode switch is set to “Mouse” before attempting to connect.*

Open a connection to a Bluetooth Human Interface Device using one of these techniques:

- From My Bluetooth Places
- Using the Bluetooth Setup Wizard

Once an HID connection is established, that connection will persist. If the computer is shut down, when the computer is turned on again the connection will re-establish automatically.



#### **MSI Reminds You...**

*HIDs usually have a button, which is sometimes difficult to find, that must be pressed before other Bluetooth devices can locate the HID. Even after the button is pressed, the HID can only be discovered for a limited time, and then the button must be pressed again. The time period can be as short as 30 seconds or as long as 180 seconds.*

*Read the documentation that accompanies the HID before you attempt to connect to the device.*

**Close an HID connection**

Under normal circumstances, there is no reason to close an HID connection; once established the connection is maintained automatically, even during the power off and power on processes.

If, for some reason, the connection must be closed: from My Bluetooth Places, right-click the service name and select Disconnect.

When an HID connection is closed manually by the operator, the connection's "persistence" is broken. The connection must be re-established manually, after which the connection will again persist until broken manually.

**Configure**

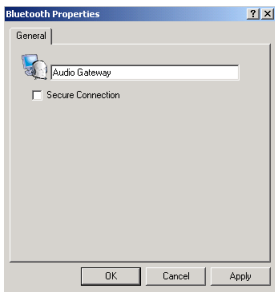
No configuration is necessary.

**\* Audio Gateway****Overview**

The Audio Gateway Application allows a remote Bluetooth device to use this computer's microphone and speakers as the remote device's audio input and output devices.

Open a connection to the Audio Gateway service that is provided by another Bluetooth device using one of these techniques:

- Windows system tray, Bluetooth icon
- From My Bluetooth Places
- Using the Bluetooth Setup Wizard

**Close an audio gateway connection:**

If the connection was established via the Bluetooth icon in the Windows system tray; click the Bluetooth icon, select Quick Connect, Audio Gateway and then select the device that is providing the service (active connections have a checkmark in front of them).

or

No matter how the connection was created, in My Bluetooth Places, right-click the service name and select Disconnect. Configure

The Bluetooth Configuration Panel > Client Applications > Audio Gateway > General tab provides options to configure:

- The application name—to change it, highlight the existing name and enter the new name.
- Enable or disable secure connection. To enable secure connection, place a checkmark in the box.

**\* Bluetooth Serial Port****Overview**

The Bluetooth Serial Port application allows this computer to establish a wireless serial connection with a remote Bluetooth device.

The applications on both this computer and the remote device must be configured to send and receive data to and from the respective communications port (COM port) assigned to the Bluetooth serial port. The wireless serial connection may then be used by the applications as though a physical serial cable connected the devices.

**Create a Bluetooth Serial Port connection**

Establish a connection using one of these techniques

- Windows system tray, Bluetooth icon
- From My Bluetooth Places
- Using the Bluetooth Setup Wizard

**Close a Bluetooth Serial Port connection**

- If the connection was established via the Bluetooth icon in the Windows system tray; click the Bluetooth icon, select Quick Connect, Bluetooth Serial Port and then select the device that is providing the service (active connections have a checkmark in front of them).

or

- No matter how the connection was created, In My Bluetooth Places, right-click the service name and select Disconnect.

**Configure**

The Bluetooth Configuration Panel > Client Applications >

Bluetooth Serial Port > General tab provides options to configure:

- The application name—to change it, highlight the existing name and enter the new name.
- Enable or disable secure connection. To enable secure connection, place a checkmark in the box.
- The communications port (COM port) to be used.



**MSI Reminds You...**

*Unless you have a specific reason to do so, DO NOT CHANGE the default COM Port setting.*

**\* Dial-up Networking**

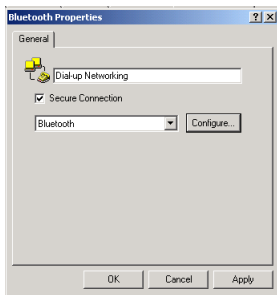
**Overview**

The Bluetooth Dial-up Networking application allows this computer to use a modem that is physically connected to a remote device to access the Internet, log on to a remote network.

Open a connection to the Dial-up Networking service that is provided by another Bluetooth device using one of these techniques:

- Windows system tray, Bluetooth icon
- From My Bluetooth Places
- Using the Bluetooth Setup Wizard

After the Bluetooth dial-up networking connection is established it can be used the same way as any other networking connection. For example, you can open a browser and explore the World Wide Web, if the remote computer has Internet access.



### Close a Dial-up Networking connection

- If the connection was established via the Bluetooth icon in the Windows system tray; click the Bluetooth icon, select Quick Connect, Dial-up Networking and then select the device that is providing the service (active connections have a checkmark in front of them).
- or
- No matter how the connection was created, In My Bluetooth Places, right-click the service name and select Disconnect.

### Configure

The Bluetooth Configuration Panel > Client Applications > Dial-up Networking > General tab provides options to configure:

- The application name—to change it, highlight the existing name and enter the new name.
- Enable or disable secure connection. To enable secure connection, place a checkmark in the box.

- The Bluetooth virtual device to be used.



### **MSI Reminds You...**

*Unless you have a specific reason to do so, DO NOT CHANGE the default Bluetooth device or alter the device's configuration.*

## **\* Fax**

### **Overview**

The Bluetooth Fax service allows this computer to send a fax using a Fax/Modem that is physically connected to a remote device.

### **To Send a Fax**

1. Open a connection to the Fax service that is provided by another Bluetooth device, using one of these techniques:
  - Windows system tray, Bluetooth icon
  - From My Bluetooth Places
  - Using the Bluetooth Setup Wizard
2. Open or create the document to be faxed and select the “Print,” “Send to Fax Recipient” or similar command that is available in most applications.

### **Close a Fax Connection**

Fax connections close automatically when the Fax transmission is complete.

### **Configure**

The Bluetooth Configuration Panel > Client Applications > Fax > General tab provides options to configure:

- The application name—to change it, highlight the existing name and enter the new name.

- Enable or disable secure connection. To enable secure connection, place a checkmark in the box.

### \* Headset

#### Overview

The Headset application allows this computer to use a Bluetooth headset (or any other device that offers the Bluetooth headset service) as the audio input and output device for this computer.

Possible uses include:

- If this computer has on-board telephone hardware, a Bluetooth headset might be used as the audio input/output device to make/receive telephone calls.
- If this computer has voice recognition capabilities, a Bluetooth headset might be used as the audio input device.

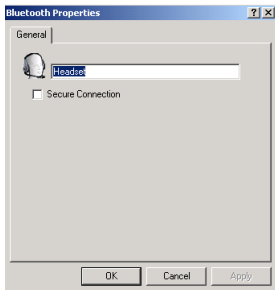
Any other scenario that requires audio input/output can potentially take advantage of a Bluetooth headset to replace a hardwired microphone and/or speakers.



#### **MSI Reminds You...**

*Windows 98 limitation—*

*Windows 98 cannot convert audio files with the extension m3u (e.g., myfile.m3u) into the Pulse Code Modulation (PCM) audio format used by Bluetooth headsets.*



## Create a Headset connection

Establish a connection using one of these techniques:

- Windows system tray, Bluetooth icon
- From My Bluetooth Places
- Using the Bluetooth Setup Wizard



### MSI Reminds You...

*Most Bluetooth headsets “ring” when a connection is attempted; answer the ring to complete the connection and begin using the headset as the audio input/output device for this computer.*

## Close a Headset connection

- If the connection was established via the Bluetooth icon in the Windows system tray; click the Bluetooth icon, select Quick Connect, Headset and then select the device that is providing the service (active connections have a checkmark in front of them).

or

- No matter how the connection was created, in My Bluetooth Places, right-click the service name and select Disconnect.

### Configure

The Bluetooth Configuration Panel > Client Applications > Headset > General tab provides options to configure:

- The application name—to change it, highlight the existing name and enter the new name.
- Enable or disable secure connection. To enable secure connection, place a checkmark in the box.

### \* File Transfer

#### Overview

The Bluetooth File Transfer application allows this computer to perform file operations on the Bluetooth Exchange Folder (and the folders and files it contains) of a remote device.

#### Copy to/from a remote device

In the Folders pane of Windows Explorer, from the Entire Bluetooth Neighborhood branch, select a device and expand that branch to view the Bluetooth Exchange Folder of the remote device.



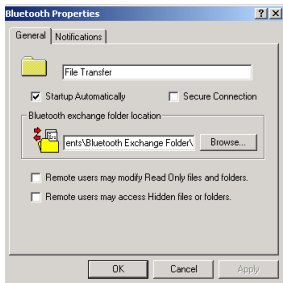
#### MSI Reminds You...

*If “Public Folder” is not available, the remote device is not configured to allow remote file operations.*

Use drag-and-drop to copy any file or folder contained in the Public Folder of the remote device to the desired folder on

this computer.

You can also drag-and-drop files or folders from this computer to the Public Folder (and its sub-folders) of the remote device.



### **Other file operations**

Right-click a file or folder in the remote device's Public Folder for a context sensitive menu. All potential menu options may not be available at all times.

Potential menu options include:

- Open—opens the selected file on this computer, using the default application for this type of file.
- Print—sends the selected file to this computer's default printer.
- Send To
- 3 ½ floppy (A)—the 3 ½ inch floppy drive on this computer
- Bluetooth Exchange Folder—the Bluetooth Exchange

Folder on this computer.

- Rename—applies only to empty folders; file names and the names of folders that contain objects cannot be changed using this technique.
- Cut, Copy, Paste, Delete, Refresh, View & New—standard Windows functions.

### Configure

The Bluetooth Configuration Panel > Client Applications > File Transfer > General tab provides options to configure:

- The application name—to change it, highlight the existing name and enter the new name.
- Enable or disable secure connection. To enable secure connection, place a checkmark in the box.

## \* Network Access

### Overview

The Bluetooth Network Access application makes it possible for this computer:

- To connect to a Local Area Network via a physical connection on a remote Bluetooth device.  
or
- To connect to an ad hoc network provided by a remote Bluetooth device.

The type of network connection that is available is determined by the configuration of the remote Bluetooth device.

### Create a Network Access connection

Establish a connection using one of these techniques

- Windows system tray, Bluetooth icon
- From My Bluetooth Places
- Using the Bluetooth Setup Wizard

**Close a Network Access connection**

- If the connection was established via the Bluetooth icon in the Windows system tray; click the Bluetooth icon, select Quick Connect, Network Access and then select the device that is providing the service (active connections have a checkmark in front of them).

or

- No matter how the connection was created, In My Bluetooth Places, right-click the service name and select Disconnect.

**Configure**

The Bluetooth Configuration Panel > Client Applications > Network Access > General tab provides options to configure:

- The application name—to change it, highlight the existing name and enter the new name.
- Enable or disable secure connection. To enable secure connection, place a checkmark in the box.

**\* PIM Synchronization****Overview**

The PIM Synchronization Application is used to synchronize the Personal Information Manager (PIM) database of this computer with the PIM database of a remote Bluetooth device.

The supported PIMs are:

- Microsoft Outlook
- Microsoft Outlook Express
- Lotus Notes.

The supported data types are:

- Business cards
- Calendar items
- Email (with or without attachments)
- Notes.

### **Configure PIM Synchronization**

The Bluetooth Configuration Panel > Client Applications > PIM Synchronization > General tab provides options to configure:

- The application name—to change it, highlight the existing name and enter the new name.
- Enable or disable secure connection. To enable secure connection, place a checkmark in the box.
- The PIM items to be synchronized and the PIM on this computer with which those items should be synced.



#### **MSI Reminds You...**

*If synchronization is enabled for a specific item type, but is not enabled for that item type on the remote device, synchronization **WILL NOT take place for that item.***

- The data item types which can be synchronized are:
  - Business cards
  - Calendar items
  - Email (with or without attachments-see below)
  - Notes

Possible synchronization options for each of these data item types include:

- **Do Not Synchronize**-this item type will not be synchronized

- **Synchronize Microsoft Outlook**-this item type will be synced with its matching entry in Microsoft Outlook, regardless of the PIM that contains this entry on the remote device. If a matching Outlook entry does not exist, it will be created
- **Synchronize Outlook-Express**-this item type will be synced with its matching entry in Express, regardless of the PIM that contains this entry on the remote device. If a matching Express entry does not exist, it will be created
- **Synchronize Lotus Notes**-this item type will be synced with its matching entry in Lotus Notes, regardless of the PIM that contains this entry on the remote device. If a matching Notes entry does not exist, it will be created.



#### **MSI Reminds You...**

*All choices are not available for all items. For example, "Note" items can only be synchronized in Microsoft Outlook, therefore Lotus Notes and Outlook Express do not appear as options in the "Notes" item shortcut menu.*

*Personal Information Managers that are not installed on this computer do not appear as options in the shortcut menus.*

- Email attachments. The only option is include or do not include attachments with email that is sent or received on this computer using this service.

**\* PIM Item Transfer****Overview**

The Bluetooth PIM Item Transfer application allows this computer to send and receive Personal Information Manager items to-and-from a remote Bluetooth device. Item transfer can be accomplished several ways:

To send, receive or exchange business cards:

1. From Windows Explorer, My Bluetooth Places, right-click the PIM Item Transfer service on a remote device and select the appropriate option.

or

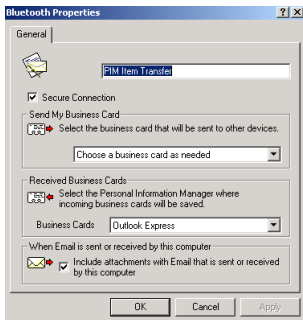
In the Windows system tray, right-click the Bluetooth icon, select Quick Connect > Business Card Exchange, select a device from the list, select the appropriate option from the shortcut menu, and then click OK.

2. From Windows Explorer, My Bluetooth Places, highlight the PIM Item Transfer service on a remote device, and then, from the Bluetooth menu on the Windows menu bar, select the appropriate action.

In addition to the business card options listed above, you can also send Notes (\*.vnt), Email (\*.vmg) and Calendar (\*.vcs) items from this menu.

3. From within a supported Personal Information Manager, select one or more items and then, from the PIM's File menu, select Send to Bluetooth.

Whether sent items are accepted by the remote device is determined by how the remote device's PIM Item Transfer service is configured.



### Close a PIM Item Transfer Connection

This application closes the open connection automatically when its task is complete.

### Configure PIM Item Transfer

The Bluetooth Configuration Panel > Client Applications > PIM Item Transfer > General tab provides options to configure:

- The application name—to change it, highlight the existing name and enter the new name.
- Enable or disable secure connection. To enable secure connection, place a checkmark in the box.
- How your business card is handled when it is requested by a remote device. The Send My Business Card options are:

**Choose a business card as needed**—each time a remote device requests your business card you must select a card

from your PIM. If you ignore the request the remote device will receive a time-out notice.

**Always send the same business card**-when this option is selected a dialog appears that allows you to set a default business card, which will be sent automatically when requests are received.

- Where to store received business cards. The Received Business Cards options are:
  - Microsoft Outlook
  - Outlook Express
  - Lotus Notes



### MSI Reminds You...

*The selected Received Business Cards option does not influence the settings on other PIM-related property pages.*

*For example, even if the PIM Item Transfer service business card option on this computer is configured to “Do Not Accept,” the PIM Item Transfer application will still accept business cards that the application has specifically requested via its “Receive” or “Exchange” functions.*

- Email attachments. The only option is include or not include attachments with email that is sent or received on this computer using this service.

## \* Printer

### Overview

The Bluetooth Printer application allows this computer to use a Bluetooth printer.

Once a Bluetooth printer has been properly installed it can be used from this computer in the same way as any other printer would be.

### **Configure**

The Bluetooth Configuration Panel > Client Applications > Printer > General tab provides options to configure:

- The application name—to change it, highlight the existing name and enter the new name.
- Enable or disable secure connection. To enable secure connection, place a checkmark in the box.

### **Install a Bluetooth Printer**

#### **Option One:**

1. Perform a search for devices and then, from Entire Bluetooth Neighborhood, right-click a Bluetooth printer, select Add Printer from the shortcut menu and follow the on-screen instructions.
2. When the wizard asks you to select a printer make and model, do so.  
If your printer is not in the list of options, click Have Disk..., insert the driver disk for the printer, and then navigate to the drive and directory that contains the driver initiation file (\*.inf) for the printer.
3. To complete the installation, follow the on-screen instructions.

#### **Option Two:**

1. From the Windows Control Panel, select Printers > Add Printer > Next > Local printer > Next
2. On the Select the Printer Port screen of the wizard:
  - a) Select Create a new port
  - b) In the Type shortcut menu, select Bluetooth

Printer Port, and then click Next

3. On the next screen, select the printer by name, and then click Connect.
4. Install the driver: when asked to select a printer make and model, do so.

If your printer is not in the list of options, click Have Disk..., insert the driver disk for the printer, and then navigate to the drive and directory that contain the driver initiation file (\*.inf) for the printer.

5. To complete the installation, follow the on-screen instructions.

**To delete a printer**, Click Start > Settings > Printers, right-click the printer to be deleted, and then select Delete from the shortcut menu.

## **6. Bluetooth Services**

### **Common Configuration Settings**

These properties can be set individually for each Bluetooth service:

- **Service Name**-the default name of each service can be changed.
- **Secure Connection**-requires that remote devices provide proof of identity and that all data be encrypted.
- **Startup Automatically**-starts the service automatically when Bluetooth is started.
- **Notifications**-provides visual and/or audio notification that a remote device is attempting to connect (or has connected) to a service on this computer.

## **\* Notifications**

### **Overview**

There are three types of notification:

- Authentication request, also called a PIN code request—this notification appears automatically in a balloon over the Windows system tray if a Personal Identification Code is required before a connection can proceed. An audio file can also be associated with the notification.
- Authorization request, also called a connection request—this type of notification can be visual, audio, or both. It notifies you of attempts to access a Bluetooth service on this computer; the connection will not proceed until you click the balloon that appears over the Windows system tray. If the notification balloon is ignored, the connection request will time out and fail.
- Notification only—this type of notification does not effect access in any way; it is solely for information purposes to let you know that a connection has been established.

### **Example**

Both Authentication and Authorization request notifications are controlled by whether Secure Connection is enabled for an individual service.

An example of how notifications might work when a remote device attempts to access a service on this computer, if all notifications are enabled:

1. Authentication: a balloon notification (audio optional) appears to prompt for a PIN code. If the PIN code does not match the code entered on the remote device,

the connection will not be allowed. Once the remote device has been authenticated this notification will not appear again, unless the paired relationship is broken and the devices must repair.

2. Authorization: a balloon notification appears and/or a sound file provides audio notification that a remote device is attempting to access a Bluetooth service on this computer. Click the balloon to proceed. A dialog box appears that offers the option of letting the connection proceed this time only or to always allow this particular remote device to use the service it is attempting to access.
3. Once a connection has been authorized, an additional visual and/or audio notification may appear (if enabled). This notification is for information only to inform the operator that a connection has been established.

After two devices are paired (step 1, above), the authentication notification will no longer appear when a connection is attempted.

If “Always allow...” is enabled during the authorization process (step 2, above), the authorization notification will not appear on future connection attempts.

Connection notification (step 3, above) only happens if it has been enabled on the Notifications tab of the individual service being accessed.

### **Service Access Notification**

“Notifications” lets you associate a sound (Windows \*.wav file) and/or a visual indication with access attempts by remote devices.

A different notification sound can be associated with each

local Bluetooth service.

### **Associate a sound with service access**

From the Bluetooth Configuration Panel, Local Services tab:

1. Double-click a service name and then select the Notifications tab.
2. Check the desired options; visual and sound may both be selected for a single event.
3. Choose a sound; click the Browse button and navigate to the sound file (\*.wav) to be used for notification.  
To preview the sound file, click the play (▶) button.
4. Click OK to close the service's property dialog box.

### **\* Audio Gateway**

The Bluetooth Audio Gateway service allows this computer to use a remote Bluetooth device's microphone and speakers as this computer's input and output devices.

For example, if this computer has voice recognition capabilities, a Bluetooth headset might be used as the audio input device.

### **Hardware Requirements**

- The Bluetooth radio on both this computer and the remote device must support audio.
- The remote device handles both audio input and output for this computer; therefore, this computer does not require a sound card, microphone, or speakers.

### **Configure the Audio Gateway Service**

From the Windows system tray, right-click the Bluetooth icon, select Advanced Configuration > Local Services, and

then double-click the Audio Gateway service. Set the common configuration properties of the service, and then click OK.

### \* Bluetooth Serial Port

The Bluetooth Serial Port service allows a remote Bluetooth device to establish a wireless serial connection with this computer. The wireless serial connection may be used by applications as though a physical serial cable connected the devices.

#### **To establish a Bluetooth Serial Port connection**

The connection must be initiated from the remote device by the Bluetooth Serial Port application.

#### **Determine the communications port being used by this computer for the Bluetooth Serial Port**

In the Windows system tray, right-click the Bluetooth icon, select Advanced Configuration, and then the Local Services tab. The COM port assigned to this service is the last item in the Bluetooth Serial Port service row. Configure the application on this computer that will use this service to send its data to this COM.

#### **Add a Bluetooth Serial Port**

The Bluetooth Serial Port service has one pre-configured Bluetooth Serial Port, but additional Bluetooth Serial Ports can be added as needed.

#### **To add a port**

1. From the Bluetooth Configuration Panel, Local Services tab, click Add Serial Service.
2. In the properties dialog box, modify the properties:

3. Enter a unique name (less than 99 alphanumeric characters).
4. Select secure connection, if desired.
5. Select Startup Automatically, if desired
6. From the COM Port shortcut menu select a communications port that is not assigned to any other service.
7. Click OK.

### **To remove a Bluetooth Serial Port**

From the Bluetooth Configuration Panel, Local Services tab, select the port to be removed and then click Delete.



#### **MSI Reminds You...**

*The Delete button is only available when a Bluetooth Serial Port is selected.*

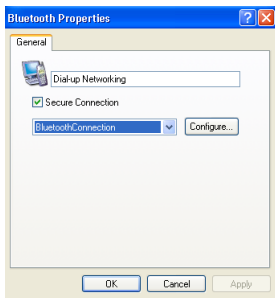
### **\* Dial-up Networking Service**

The Bluetooth Dial-up Networking service makes it possible for a remote Bluetooth device to use a modem that is physically connected to this computer. The remote device can then access the Internet or log on to a remote network.

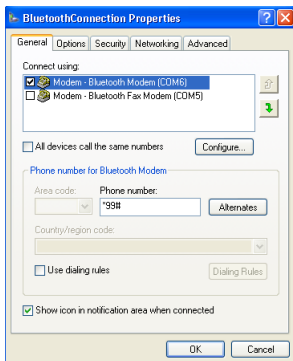
#### **Configure the Dial-up Networking service:**

From the Windows system tray, right-click the Bluetooth icon, select Advanced Configuration > Local Services, and then double-click the Dial-up Networking service.

- Select the physical modem to be used from the Modems: shortcut menu.



- Set the common configuration properties of the service, and then click OK.



### **\* Fax Service**

The Fax service allows a remote Bluetooth device to send a Fax via a modem that is physically attached to this computer. Configure the Fax service:

From the Windows system tray, right-click the Bluetooth icon, select Advanced Configuration > Local Services, and then double-click the Fax service.

- Select the physical modem to be used from the Modems: shortcut menu.
- Set the common configuration properties of the service, and then click OK.

### **\* File Transfer Service**

#### **Overview**

The File Transfer service allows this computer to perform file operations on the Bluetooth Exchange Folder (and the folders and files it contains) of a remote device.

#### **Basic setup procedure**

Right-click the Bluetooth icon and select Explore My Bluetooth Places.

Configure Windows Explorer so that the Folders pane is visible (View > Explorer Bar > Folders).

In the Folders pane, select Entire Bluetooth Neighborhood and then, on the menu bar, select Bluetooth > Search For Devices.

In the Folders pane, expand Entire Bluetooth Neighborhood to show the devices in the vicinity.

#### **Copy to/from a remote device**

In the Folders pane of Windows Explorer, from the Entire

Bluetooth Neighborhood branch, select a device and expand that branch to view the Bluetooth Exchange Folder of the remote device.

**MSI Reminds You...**

*“Public Folder” is not available, the remote device is not configured to allow remote file operations.*

Use drag-and-drop to copy any file or folder contained in the Public Folder of the remote device to the desired folder on this computer.

You can also drag-and-drop files or folders from this computer to the Public Folder (and its sub-folders) of the remote device.

**Other file operations**

Right-click a file or folder in the remote device’s Public Folder for a context sensitive menu. All potential menu options may not be available at all times.

Potential menu options include:

- Open—opens the selected file on this computer, using the default application for this type of file.
- Print—sends the selected file to this computer’s default printer.
- Send To
  - 3 ½ floppy (A)—the 3 ½ inch floppy drive on this computer
  - Public Folder on My Device—the Public Folder on this computer.
- Rename—applies only to empty folders; file names and the names of folders that contain objects cannot

be changed using this technique.

- Cut, Copy, Paste, Delete, Refresh, View & New—standard Windows functions.

### **\* Headset Service**

The Bluetooth Headset Service allows this computer to provide audio input/output for remote Bluetooth devices.

For example, if the remote device is a Bluetooth telephone, this computer's microphone and speakers can be used as speakerphone input and output for that device.



#### **MSI Reminds You...**

*Windows 98 limitation—*

*Windows 98 cannot convert audio files with the extension m3u (e.g., myfile.m3u) into the Pulse Code Modulation (PCM) audio format used by Bluetooth headsets.*

### **Hardware Requirements**

- This computer must have a sound card, microphone, and speakers installed.
- The Bluetooth radio on both on this computer and the remote device must support audio.

### **Configure the Headset Service**

- From the Windows system tray, right-click the Bluetooth icon, select Advanced Configuration > Local Services, and then double-click the Headset service.
- Set the common configuration properties of the service, and then click OK.

### \* Network Access

The Bluetooth Network Access service makes it possible for a remote Bluetooth device to use the Local Area Network connection that is physically attached to this computer. After this computer has been configured to provide the Network Access service to other Bluetooth devices, it will not be able to use the Bluetooth Network Access service provided by another Bluetooth device without being re-configured. Put another way, this computer cannot be both a Bluetooth Network Access server and a Bluetooth Network Access client at the same time.

### *Setup for Windows 98SE & Windows Me*



#### **MSI Reminds You...**

*Internet Protocol routing software is required on Windows 98SE and Windows Me servers.*

*Install and configure the routing software as instructed by the software's manufacturer.*

### \* **Configure the server:**

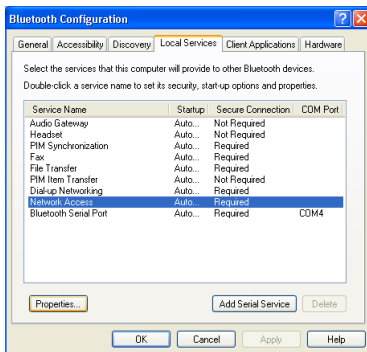
1. From the Windows Control Panel, double-click the Network icon.
2. On the Configuration tab, select TCP/IP-> Bluetooth LAN Access Server Driver (scroll down if necessary).
3. Click Properties and select the IP Address tab.
4. Select Specify an IP address
5. Enter an IP Address (suggested value—192.168.1.1)
6. Enter a Subnet Mask (suggested value—255.255.255.0)
7. Click OK twice to close the dialog boxes and then click

YES to restart the computer.

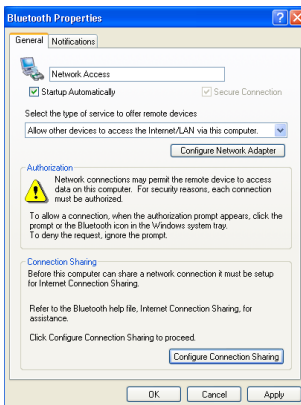
### Setup for Windows 2000 and Windows XP

If Internet Connection sharing was previously enabled (before Bluetooth utility was installed) it must be disabled and then re-enabled before the Bluetooth network adapter can use it.

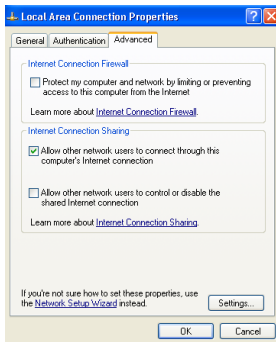
1. From the Windows system tray, right-click the Bluetooth icon and select Advanced Configuration from the shortcut menu.
2. In the Bluetooth configuration panel, select the Local Services tab, Network Access and then click Properties....



3. From the Network Access, General properties page, in the Type of service shortcut menu, select "Allow other devices to access the Internet/LAN via this computer," and then click Configure Connection Sharing.



4. Right-click Local Area Connection, select Properties and then select the Sharing tab.



5. Select Enable Internet Connection Sharing for this connection, click OK, and then click YES in the confirmation dialog box.

**\* Client Configuration**

1. From the Windows system tray, right-click the Bluetooth icon and select Network Access from the shortcut menu.
2. Select the device you want to connect and the server will accept the connection.
3. The Bluetooth icon will change to green if the connection is created.

**\* Server Configuration**

1. From the Windows Control Panel, double-click the Network icon. On the Configuration tab, select TCP/IP and enable the Sharing Network option.
2. The home Internet must connect to the Bluetooth devices. Click OK and the client will be able to connect.

**\* PIM Item Transfer**

**Overview**

The PIM Item Transfer service allows Personal Information Manager items to be transferred between this computer and a remote Bluetooth device.

Four data types are supported:

- Business Cards
- Calendar Items
- Email Messages
- Notes

Each data type can be saved in any of the supported and installed PIMs.

**MSI Reminds You...**

*PIMs which are not installed on this computer will not appear in the shortcut menus.*

When the PIM that is associated with an individual data type is changed on the PIM Item Transfer page, that data type is also changed for the PIM Synchronization service.

**Configure**

In addition to the configuration options common to all Bluetooth services, this service also has settings that determine:

- How business card requests are handled. The options are:
  - Never send my business card—ignore the request
  - Choose a business card as needed—when prompted, select a business card to be sent to the requester.
  - Always send the same business card—when a request is received always send the same business card. When this option is selected, a dialog box appears from within which an installed Personal Information Manager (if more than one is installed on this computer) and an existing business card can be selected.
  - Previously sent business cards—once a card is selected using the “Always send the same business card” option, above, that card will be added to the shortcut menu as an option.

**MSI Reminds You...**

*Previously sent business card additions to the menu*

*are limited to ten, after which the oldest contact will be replaced.*

- Where to store inbound data items, on an individual basis. Options include (not all options apply to all items):
  - Do Not Accept
  - Any of the installed PIMs on this computer
  - Save to Folder
- The Bluetooth Exchange Folder location—the directory on this computer where inbound items that are not to be saved in a PIM will be kept.



#### **MSI Reminds You...**

*This is also the folder where the File Transfer service stores inbound items. If this folder is reconfigured here, it will also be reconfigured in that service automatically.*

- Whether to send/receive attachments with email. Check or clear this option, as appropriate.

#### **Close a PIM Item Transfer connection**

PIM Item Transfer connections close automatically when the data transfer is complete.

#### **Default Business Card Selection**

When the “Always send the same business card” option is selected, a dialog box appears to allow the selection of a default business card.

The first time the dialog box appears it provides a way to choose the Personal Information Manager that stores the default business card. Click the down-arrow in the PIM short-

cut menu and select the PIM to be used.

On subsequent appearances of this dialog box, the PIM selection option is not available.

### **Change the selected PIM**

On the PIM Item Transfer properties page, “Received items” section, there is a Business Cards shortcut menu. When a PIM was selected during initial setup the selected item in this menu was set to the same PIM. To change the PIM used for the default business card, open this shortcut menu and select a new PIM.



#### **MSI Reminds You...**

*A new default business card must be selected from the database of the newly selected PIM.*

### **Choose a default business card**

1. In the Select a Bluetooth Business Card dialog box that appears when “Always send the same business card” is selected, highlight the card.



#### **MSI Reminds You...**

*Once a card is highlighted, if you “hover” the mouse pointer over that selection, a balloon appears with additional information about that contact.*

2. Click OK to choose a highlighted business card and return to the PIM Item Transfer Properties page. The chosen contact now appears in, and is selected in, the

“Business card requests” shortcut menu.

If the “Always send the same business card” option is selected again, and a different contact chosen, the properties page will display both contacts in the shortcut menu.



**MSI Reminds You...**

*In addition to the default menu options, the shortcut menu can hold up to ten contact names.*

**\* PIM Synchronization**

The PIM Synchronization service can be used by a remote device to synchronize its Personal Information Manager (PIM) database with the PIM database of this computer..

Four data types are supported:

- Business cards
- Calendar items
- Email messages
- Notes.

Whether an individual item is accepted and where it is stored, when accepted, is configured in the PIM Item Transfer service. If that service is not configured to store a particular data type in Outlook, then that data type cannot be synchronized.



**MSI Reminds You...**

*Data types that will be synchronized must be saved in the PIM database (this is configured in the PIM Item Transfer service); otherwise, that data type will not be available for selection (it will be grayed out) in the PIM Synchronization configuration settings.*

Microsoft Outlook permits duplicate entries, so all duplicates may not be exchanged in the synchronization process.



### MSI Reminds You...

*Only Outlook's default contacts folder is synchronized. Items in sub-folders are not synchronized. Items that are moved from the default folder to a sub-folder will appear to have been deleted the next time synchronization takes place.*

## 7. Hardware Settings

The Hardware tab of the Bluetooth Configuration Panel provides basic information about the Bluetooth hardware installed on this computer and access to the Advanced Settings dialog box, if required:

- Devices:
  - **Name:** the name of the device, e.g., *MSI Bluetooth Device*
  - **Type: the type of device, e.g., USB.**
- Device Properties:
  - **Device status:** indicates that the device is operating properly or that there is a problem/conflict.
  - **Manufacturer:** the name of the company that manufactured the device selected in the Devices section of this dialog box.
  - **Firmware Revision:** the manufacturer's firmware version number.
  - **Device Address:** the Bluetooth Device Address (BDA or BD\_Addr) assigned to this device when it was manufactured.

- **HCI Version:** the version number of the Bluetooth Specification that the Host Controller Interface complies with.
- **HCI Revision:** the revision number of the Bluetooth Specification that the Host Controller Interface complies with.
- **LMP Version:** the version number of the Bluetooth Specification that the Link Manager Protocol complies with.
- **LMP Sub Version:** the subversion number of the Bluetooth Specification that the Link Manager Protocol complies with.
- The **Advanced** button: displays the Advanced Settings dialog box, which allows you to select the country code and transmission power settings. *This option is not available on all systems.*

#### **\* Advanced Settings**

When available, this dialog box is reached from the Hardware tab of the Bluetooth Configuration Panel.



#### **MSI Reminds You...**

*Depending on the country in which the hardware is sold and/or in which it will be used, the Advanced button may not be present.*

From this dialog box you can set the:

- **Country Code:**
  - North America, Europe (except France), and Japan

- France and China
- Maximum Transmission Power:
  - High
  - Medium
  - Low.

Click **Apply** to implement the changes. A dialog box appears with notification that the Bluetooth device attached to this computer must be reset before the change(s) will take effect. **Click Yes** to reset the Bluetooth device now—all open Bluetooth connections will be closed.

**Click No** to save the changes—the changes will be applied the next time the Bluetooth device is reset or restarted.

## **8. Accessibility Settings**

The Accessibility tab of the Bluetooth Configuration Panel lets you specify whether remote devices may access this computer, which remote devices have access, and whether an audio warning is played when a Personal Identification Number (PIN code) is required.

### **Allow other devices to discover this computer**

Select “Let other Bluetooth devices discover this computer” to permit remote Bluetooth devices to find and report this computer.

If “Allow No devices” (below) is selected, this option is not available.

### **Control the types of devices that are allowed to connect to this computer**

From the “Devices allowed to connect to this computer” shortcut-menu, select:

- **No devices**—no remote devices are permitted to ini-

tiate a connection with this computer. However, this computer can still initiate connections with remote Bluetooth devices.

- **All devices**—all remote devices are permitted to connect to this computer.  
Connections are subject to additional security restrictions, such as authentication and authorization, that may be required by the individual services provided by this computer.
- **Only paired devices**—only devices that have been paired with this computer are allowed to connect to it.
- **Only devices listed below**—only the listed devices are allowed to connect to this computer (see Accessibility, adding and deleting devices).

### **Choose an audio notification file**

When Secure Connection is enabled for any of the Bluetooth Services on this computer a PIN code is required before that service can be accessed. To choose a notification sound that will play when a remote device attempts to access a service that requires a secure connection, click Select audio file... and select the sound (\*.wav) file to be played.

Limit access to this computer to specific remote devices  
From the Bluetooth Configuration Panel, Accessibility tab, in the Allow shortcut menu, select “Only devices listed below”.

### **Add a device to the list**

1. Click Add Device
2. In the Devices with access... dialog box select the desired device(s) and click OK.



**MSI Reminds You...**

*Multiple devices may be selected using SHIFT + click and/or CTRL + click.*

**Delete a device from the list**

In the list of devices allowed to access this computer, select the device to be removed from the list, and then click Delete.

**9. Discovery Settings**

The settings on the Discovery tab of the Bluetooth Configuration Panel determine whether this computer looks for other Bluetooth devices automatically, how often it looks and what type of devices it looks for.

**Periodic Search for Devices**

When “Look for other Bluetooth devices” is selected, Bluetooth automatically searches for devices every X minutes. X is a whole number between 1 and 60. To change the time between auto inquiries, highlight the existing time and enter the new time.



**MSI Reminds You...**

*When My Bluetooth Places is first opened it performs an initial automatic search for devices even if “Look for other Bluetooth devices” is not enabled.*

**Determine the devices that will be reported**

Bluetooth can screen out devices that you do not need access to.

The options are:

- Report all Bluetooth devices

- Report only selected Bluetooth devices (see Discovery, Adding Specific Devices and Discovery, Deleting Specific Devices).
- Select the desired option from the drop-down list.

### **Discover Specific Devices**

The type of device(s) that this computer looks for and reports when it is searching for other Bluetooth devices can be limited.

Limit the remote devices reported

Bluetooth can report only specific devices, specific class(es) of device(s), or specific type(s) of device(s) within a class.

- Specific devices: an individual computer or Bluetooth cellular telephone are examples of specific devices.
- Specific class of device: “computer” is an example of a class of devices
- Specific type of device within a class: “laptop” is an example of a specific type of device within the “computer” class of devices.

The devices to be discovered can be mixed-and-matched; you can discover one or more specific devices, classes of devices and types of devices within a class at the same time.

### **Remove a device from the list of devices to be discovered**

In the Bluetooth Configuration Panel, from the Discovery tab, select the device to be removed and click the Delete button.



#### **MSI Reminds You...**

*If “Report only selected Bluetooth devices” is not selected the Delete button will not be available.*

### **Temporarily override the discovery of specific devices**

In the Bluetooth Configuration Panel, from the Discovery tab, select “Report all Bluetooth devices.” The specifically selected devices will be discovered along with all other devices. To re-enable specific device discovery re-select “Report only selected Bluetooth devices.”



#### **MSI Reminds You...**

*When all devices are deleted an error message will appear if “Report all Bluetooth devices” is not selected.*

## **3.4 Security**

### **1. Authentication**

Authentication is used to verify identity; it requires a pass-key or link key from the remote device. When a remote device attempts access, a visual and/or audio warning notifies the local operator.

If the notification is ignored, access is denied after a preset timeout.

When devices are “paired,” those devices automatically exchange a Link Key and Authentication is carried out without operator intervention.

### **2. Authorization**

Authorization is Yes-or-No security that requires operator intervention to avoid having the connection time out and fail.

Authorization is limited to:

- **Yes**, you may connect (click the balloon to proceed)
- **No**, you may not connect (ignore the balloon prompt and the connection will fail).

### **3. Bluetooth Device Identity**

Every Bluetooth device has a unique Bluetooth Device Address (BDA) assigned to it during the manufacturing process. This address cannot be changed by the end-user.

A device's BDA is usually displayed in hexadecimal format; 00:D0:B7:03:2E:9F is a valid BDA.

Each Bluetooth device also has an operator-configurable, user-friendly name to help distinguish it from other devices. The user-friendly name may be up to 99 alphanumeric characters in length and may contain spaces. **My Personal Computer** is a valid user-friendly name.

### **4. Encryption**

Encrypting data translates it into an unreadable format using a secret key or password. Decrypting the data requires the same key or password that was used to encrypt it.

### **5. Link Key**

A unique, internally generated, access code based on a passkey, the Bluetooth Device Address and an internally generated random number.. Link Keys are generated automatically when devices Pair.

After a link key is generated, manual entry of the passkey is not required.

## 6. Pairing Devices

Pairing allows you to avoid entering access information each time a connection is attempted. Paired devices share a unique Link Key, which they exchange each time they connect.



### **MSI Reminds You...**

*The mate of a pair always appears in My Bluetooth Places, even if the mate is not turned on or is out of connection range.*

### **Paired devices remain paired even when**

- One of the devices is not on
- A service connection is interrupted or the service stopped
- One or both devices are rebooted.

### **To Pair with another device**

If Secure Connection is enabled, devices will pair automatically the first time they connect (a passkey must be successfully exchanged).

To pair with a device manually:

In the Folders pane of My Bluetooth Places, right-click a device, select Pair Device from the shortcut menu, and then follow the on-screen instructions.

### **Remove Pairing**

In the Folders pane of My Bluetooth Places, right-click a paired device and select Unpair Device from the shortcut menu.

## **7. Passkey**

An alphanumeric string up to 16 characters in length. Passkeys are also called Personal Identification Numbers, or PIN codes.

A passkey may be required if the Secure Connection option is enabled for a Bluetooth service or application.

## **8. Secure Connection**

A passkey or link key is required each time a connection is attempted.

All data exchanged over the Bluetooth connection is encrypted.

Depending on other configuration options, authorization may also be required.

## **9. Security Request Dialog Box**

A Bluetooth passkey request and/or Bluetooth Authorization request balloon may appear over the Windows system tray when a connection is attempted if Secure Connection is enabled.

Click the balloon to proceed.

## **3.5 Troubleshooting**

### **1. Cannot connect to a paired device**

Paired devices are always displayed in My Bluetooth Places, even if the remote device is out of range or not powered up. Verify that the remote member of the pair is within radio range, and powered up, and then attempt the connection again.

### **2. Cannot discover services on an unpaired remote device**

The remote device may not be powered up or may be out of range.

- Verify that the remote device is powered up.
- Verify that the remote device is in Connectable mode (Bluetooth Configuration Panel > Accessibility tab).
- Perform a Search for Devices to verify that the device is within range.

### **3. Dial-up Networking service does not start**

The Dial-up Networking service will not start unless a properly configured modem is attached to the server.

- Verify that the modem is usable as a local device on the computer to which it is attached.
  - In the Bluetooth Configuration Panel, Local Services tab, double-click the Dial-up Networking service:
  - Click the down arrow in the Modem field and select the modem that will be used to dial out
  - Click the OK button

- Click the OK button to close the Bluetooth Configuration Panel.

#### ***4. Determine the Bluetooth Device Address (BDA) of my hardware device***

In the Bluetooth Configuration Panel, on the Hardware tab, in the Devices section, select the device you want to determine the address of. In the Device Properties section of the dialog box, the fourth entry, Device Address, is the BDA of the selected Bluetooth device.

#### ***5. Determine the version of the Host Controller Interface (HCI)***

In the Bluetooth Configuration Panel, on the Hardware tab, in the Device Properties section, the fifth entry provides Bluetooth Specification compliance information for the Host Controller Interface.

The sixth entry contains the Specification Revision information for the Host Controller Interface, if appropriate.

#### ***6. Determine the version of the Link Manager Protocol (LMP)***

In the Bluetooth Configuration Panel, on the Hardware tab, in the Device Properties section, the seventh entry provides Link Manager Protocol version number information.

The eighth entry contains the Link Manager Protocol subversion number information, if appropriate.

#### ***7. Find information about the Bluetooth hardware attached to***

***my computer***

In the Bluetooth Configuration Panel, select the Hardware tab.

**8. *Internet Connection Sharing Does Not Work***

This occurs because Internet Connection Sharing was enabled when Bluetooth was installed (this is a Microsoft Windows behavior and is considered proper operation).

To resolve the “problem”:

1. Disable Sharing for the Ethernet adapter:
  - a) Windows Control Panel > Network and Dial-up Connections
  - b) Right-click “Local Area Connection,” select Properties, and then select the Sharing tab.
  - c) Clear (uncheck) the box for “Enable Internet Connection Sharing for this connection” and click OK.
2. Re-enable Sharing for the Ethernet adapter; repeat Step 1.c.), and select (check) the sharing box.

If offered an option to select an adapter, select “Bluetooth network adapter.” (This option will not appear unless more than one adapter is available.)

If asked to reboot the computer, do so.

**9. *Test a Network Access connection***

If the client is hardwired to the LAN, unplug the hardwired connection to ensure that the test checks the wireless connection rather than the hardwired connection.

If the server has access to the Internet, open a browser on the client and connect to the World Wide Web.

You may also Ping the server from the DOS prompt.

### ***10. Unknown Port message when using a Bluetooth Serial Port***

The “Unknown Port” error message usually means an attempt was made to connect a port that was in use. Additional Bluetooth Serial Ports can be added if they are required.

### ***11. Bluetooth Headset Doesn't Always Function Under WIN 98***

Windows 98 cannot convert audio files with the extension m3u (e.g., myfile.m3u) into the Pulse Code Modulation (PCM) audio format used by Bluetooth headsets; this is a limitation of Windows 98.

Other versions of Windows (2000, ME and XP) can translate m3u audio files into the PCM format.

Possible solutions are:

- Upgrade to a newer version of Windows
- Use an m3u-to-mp3 conversion utility to convert the file(s) into a format that is supported by Windows 98. (Conversion utilities are available as freeware or shareware on the Internet.)



## ***NOTES***

---

---

---

---

---

---

---

---

---

---

## ***4. Technical Support***

Refer to the following sources for additional information and for product and software updates.

- ❖ The MSI website (<http://www.msi.com.tw/>) provides updated information on MSI Bluetooth hardware and software.
- ❖ For technical support, please email to [support@msi.com.tw](mailto:support@msi.com.tw).



# **NOTES**

---

---

---

---

---

---

---

---

---

---

## *5. Glossary*

### **BDA**

Bluetooth Device Address. Every Bluetooth device has a unique 48-bit binary Bluetooth Device Address (BDA) burned into its Read-Only Memory (ROM). This address cannot be changed by the end-user.

A device's BDA is usually displayed in hexadecimal format; 00:D0:B7:03:2E:9F is a valid BDA.

Each Bluetooth device also has an operator-configurable, user-friendly name to help distinguish it from other Bluetooth devices. The user-friendly name may be up to 99 alphanumeric characters in length and may contain spaces. **My Personal Computer** is a valid user-friendly name.

### **Device Inquiry**

The process of searching for other Bluetooth devices.

### **DHCP**

Dynamic Host Control Protocol-when enabled, connecting devices are assigned an Internet Protocol (IP) address by the server.

### **FTP**

File Transfer Protocol

### **HCI**

Host Controller Interface

**IrDA**

Infrared Data Association

**IrMC**

Infrared Mobile Communications

**Link Key**

An internally-generated unique security key that is exchanged by paired devices as proof of identity before a connection is established.

**LMP**

Link Manager Protocol—used by Bluetooth for internal communications.

**Page Scan Mode**

A Bluetooth mode in which a server is actively listening (scanning) for a client to “page” it. The server then answers the page and attempts to set up a connection with the paging device (the client).

**Passkey**

An alphanumeric string up to 16 characters in length. Passkeys are also called PIN codes, or Personal Identification Numbers.

**Piconet**

A network of devices connected in an ad hoc fashion using Bluetooth technology. A piconet is formed when at least two

devices, such as a portable PC and a cellular phone, connect. A piconet can support up to eight devices. When a piconet is formed, one device acts as the master while the others act as slaves for the duration of the piconet connection.

**PIM**

Personal Information Manager—an application, such as Microsoft Outlook, that is used to manage contacts, keep track of phone numbers, etc.

**PIN**

Personal Identification Number, also referred to as a “pass-key” or “password.”

**Scatternet**

A group of independent and non-synchronized piconets that share at least one common Bluetooth device. Bluetooth devices must have point-to-multipoint capability to engage in scatternet communication. There may be a maximum of 10 fully loaded piconets in a scatternet.

**Service Discovery**

The process of determining the services that a Bluetooth server provides.

**SysTray**

The Windows system tray—usually located in the lower-right corner of the screen.