

AVR Playground V2

Quick Reference
www.avrcard.com

X10: Serial Port 1			
Pin	Function	Alt. Function	Level
1	(N.C.)		
2	TXD	RXD	RS-232
3	RXD	TXD	RS-232
4	(N.C.)		
5	GND		
6	(N.C.)		

Pin functions are selected by jumpers J13.

X11: Serial Port 2			
Pin	Function	Alt. Function	Level
1	+Vin (activated by J2)		
2	TXD	RXD	RS-232
3	RXD	TXD	RS-232
4	B		RS-485
5	GND		
6	A		RS-485

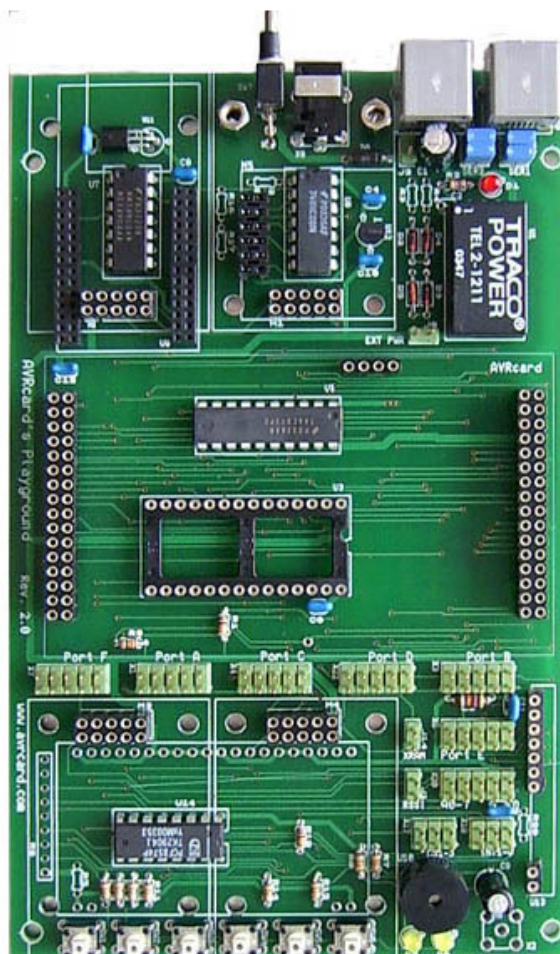
Pin functions are selected by jumpers J15.

Note: Either RS-232 or RS-485 is available on this port, according to jumper setting on the AVRcard core module.

X8: External Power	
Pin	Function
inner	PWR -
outer	PWR +

Plug type: EIAJ Standard JSAP3

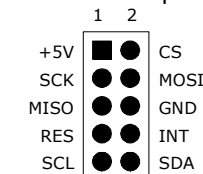
Fixed Connections		
Port	To	Function
PD4	BT module	CTS
	EasyRadio module	RTS
PD5	BT module	RTS
	EasyRadio module	CTS
PD6	BT module	DCD
PD7	BT module	DSR
PB4	LCD	RS



Jumpers			
No.	Des.	ON	OFF
J1	RSSI	RSSI Output of EasyRadio module connected to ADC7	N.C.
J14	XRAM	CS of SRAM connected to A15	CS of SRAM pulled high
J9	EXT_PWR	External regulated DC power connected to VCC	N.C.

Expansion Modules		
No.	Function	Alt. Function
M1	General	Promi-ESD Bluetooth-to-serial adapter (M5)
M2	General	IIM7010A, TCP/IP over Ethernet (U9)
M3	General	16x3 LCD Module (U6)
M4	General	

Pinout of expansion module connectors:



CS of expansion modules are routed to X17:

X17: SPI select lines	
No.	Function
1	CS Module 1
2	CS Module 2
3	CS Module 3
4	CS Module 4
5	CS LCD Module
6	Beeper

Interrupt outputs of expansion modules are routed to X18:

X18: Interrupt lines	
No.	Function
1	INT Module 1
2	INT Module 2
3	INT Module 3
4	INT Module 4
5	INT IIM7010A
6	INT PCF8574 (Keyboard)

General pinout of port headers:

